

---

# **PILOT STUDY: EFFECTS OF QUANTUM RESONANCE THROUGH DIGITAL AUDIO APPLICATION**

---

**Saint Petersburg Research Institute of Physical Culture and Sports**

**Customer:** TOGA Limited  
3960 Howard Hughes Parkway,  
Suite 500, Las Vegas, NV 89169, USA.

**Developer:** Subtle Energy Sciences LLC  
Madison, IN, 47250, USA

**Test Samples:** Quantum Resonance Digital Technology  
Application (Yippi Wave 3.0)

Quantum Healthcare, Sleep support, Brain Enhancement,  
Quantum Nutrition & Relaxation



**Duration of study:** Three (3) months (Aug – Sept 2019)

## Abstract

**Objective:** This pilot study investigated whether short-term exposure to a Quantum Resonance Technology through digital audio application of purported subtle energy technology delivered on a smartphone would affect human stress and energy levels, water and space.

**Methods:** The Dynamic Electrophotonic Imaging (EPI) Analysis based on Gas Discharge Visualization (GDV) method was used to study the influence of the purported subtle energy technology. In addition EPI water and environment devices were used for both water and space testing respectively.

**Results:** Statistically significant difference between control and experimental samples were demonstrated on water, space and human under the influence of Yippi Wave 3.0 digital quantum resonance technology delivered on a smartphone.

The human subjects exposed to Yippi Wave 3.0 digital audio had reduced stress levels and increase in their general energetic states. The use of mineral water which underwent the Yippi digital audio recorded increased variations which signifies increased activity in water. There was significant distinctions between mineral water and mineral water which underwent influence of the Yippi Wave 3.0 digital audio. An observation of a positive change in energy of space was recorded under the influence of Yippi Wave 3.0 digital audio compared to placebo.

# Content

1.0	Abstract	3
2.0	Test of the influence of Yippi Wave 3.0 on state of water	
2.1	Measurement procedure	
2.2	Results	5-8
3.0	Test of the influence of Yippi 3.0 on space	9-10
3.1	Measurement procedure	
3.2	Results	
4.0	Test of the influence of Yippi Wave 3.0 on human body states	11-18
4.1	Measurement procedure	
4.2	Subjects	
4.3	Results	
4.3.1	Test group	
	<ul style="list-style-type: none"><li>- Influence of Area (wf)</li><li>- Influence of Area (f)</li><li>- Energy of glowing (wf)</li><li>- Energy of glowing (f)</li><li>- Activation coefficient (stress levels)</li></ul>	
4.3.2	Placebo group	
	<ul style="list-style-type: none"><li>- Placebo group of glowing (wf)</li><li>- Placebo Area of glowing (f)</li><li>- Placebo Energy (wf)</li><li>- Placebo Energy (f)</li><li>- Activation coefficient (stress level)</li></ul>	
5.0.	Conclusion	19

# Part 1. Testing of Yippi Wave 3.0 influence to water samples.

## Protocol of experiment.

1. 10 glasses of tap water were used for experiments. Glasses were kept closed in a dark cool place. The reason why water is kept in dark cool place is to preserve the water used in the original state. Water changes properties under the influence of light.
2. 5 glasses were positioned and exposed to Yippi Wave 3.0 digital audio from a mobile phone, while other 5 glasses served as control.
3. Bio-Well Elements (EPI water measuring) device was used.
4. Each time 1 glass of water was tested 5 times, 200 tests overall each time. When the EPI parameters are measured, a drop of the water taken from each glass is suspended at 2-3mm distance above the glass surface of the optical window of the device and the glow from the meniscus of the water is registered. (EPI water measuring device shown in Figure 1)
5. Testing was done:
  - Immediately after positioning glasses exposed to Yippi Wave 3.0 digital audio being played from mobile phone
  - After 10 minutes.
  - After 20 minutes
  - After 60 minutes
6. Statistical processing of data with comparing control and Yippi Wave 3.0 digital audio influenced waters was done every time for every pair of samples. Results are presented in Figure 2. The numbers represent area (number of glow of the water drop) and standard deviation.

## Conclusions

1. Statistically significant difference between control water samples and Yippi Wave 3.0 audio influenced water samples was found. Properties of water changed and that changed the emission of light captured from water drop.
2. Significant response was observed strongest in water following 60 min exposure to the Yippi Wave 3.0 (Quantum Nutrition, Quantum Healthcare, Relaxation, and Brain Enhancement) digital audios that was working on an active smartphone.

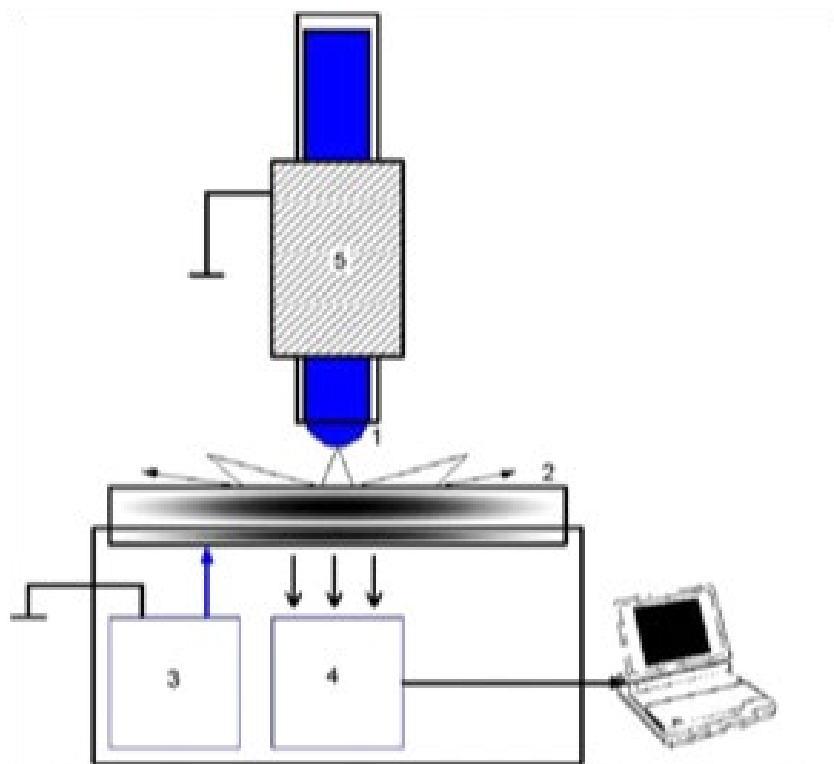


Figure 1: Principle of water measuring with EPI device. 1 – Water drop; 2 – gas discharge;  
3 – power unit; 4 – optical system; 5 – electrode.

Test	Control, averaged on 30 tests	Yippi Wave 3.0 audio influenced waters, averaged on 30 tests
Yippi Wave 3.0 – Quantum Nutrition		
Immediately after	873 +/- 127	1229+/- 209
10 minutes	903 +/- 158	1349 +/- 329
20 minutes	1003 +/- 253	1599 +/- 579
60 minutes	1380 +/- 281	2229 +/- 829
Yippi Wave 3.0 – Quantum Healthcare		
Immediately after	1179 +/- 372	1670 +/- 639
10 minutes	1781 +/- 551	2029 +/- 734
20 minutes	1167 +/- 371	2843 +/- 782
60 minutes	2396 +/- 733	3449 +/- 1143
Yippi Wave 3.0 – Relaxation		
Immediately after	1361 +/- 361	1674 +/- 472
10 minutes	2089 +/- 644	2724 +/- 619
20 minutes	2243 +/- 648	3143 +/- 721
60 minutes	2396 +/- 733	4041 +/- 1143
Yippi Wave 3.0 – Brain Enhancement		
Immediately after	1439 +/- 381	1644 +/- 276
10 minutes	1529 +/- 397	2003 +/- 861
20 minutes	2238 +/- 691	3153 +/- 1121
60 minutes	2767 +/- 847	4685 +/- 1416

Figure 2

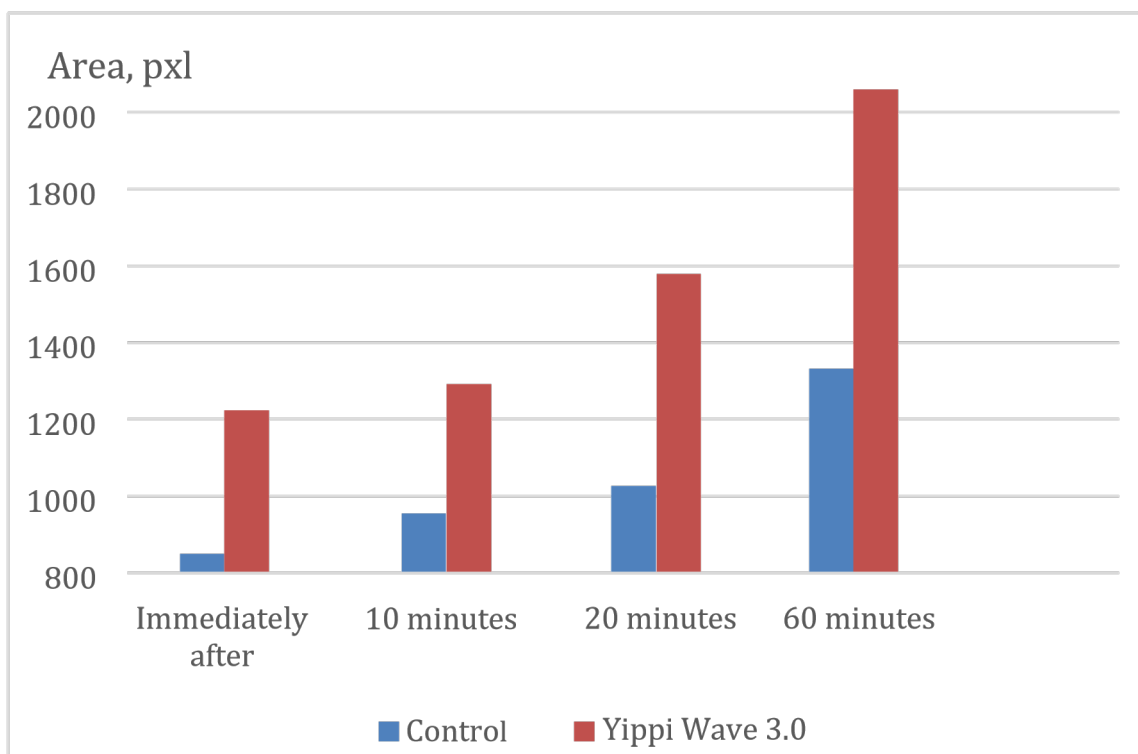


Fig. 1.0. Changes of parameters for water samples (Quantum Nutrition)

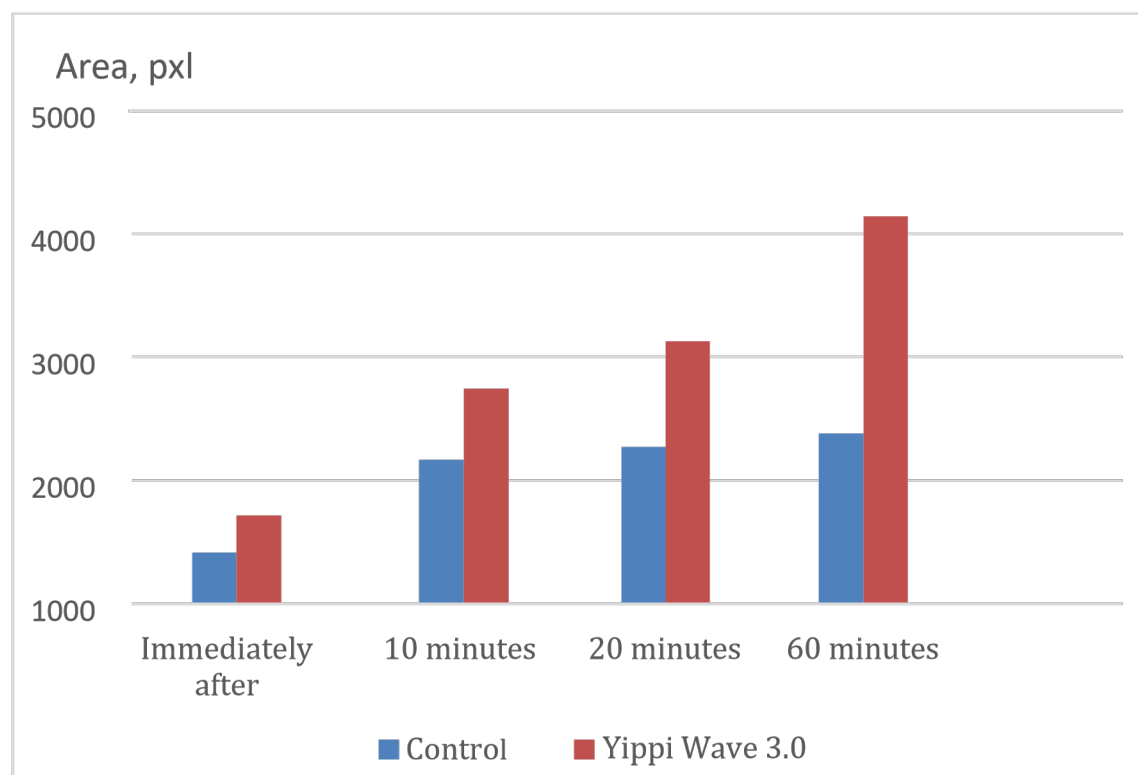


Fig. 2.0. Changes of parameters for water samples (Relaxation)



## Part 2. Testing of Yippi Wave 3.0 influence on space.

### Measurement Procedure

For the measurement of the influences of the Yippi Wave 3.0 on space states, the EPC-ECOTESTER with sensor –antenna “Sputnik” was used. The signal from the antenna correlates with the state of spaces around the antenna and was documented as the EPC-parameter "Energy of glowing" of the metal cylinder.

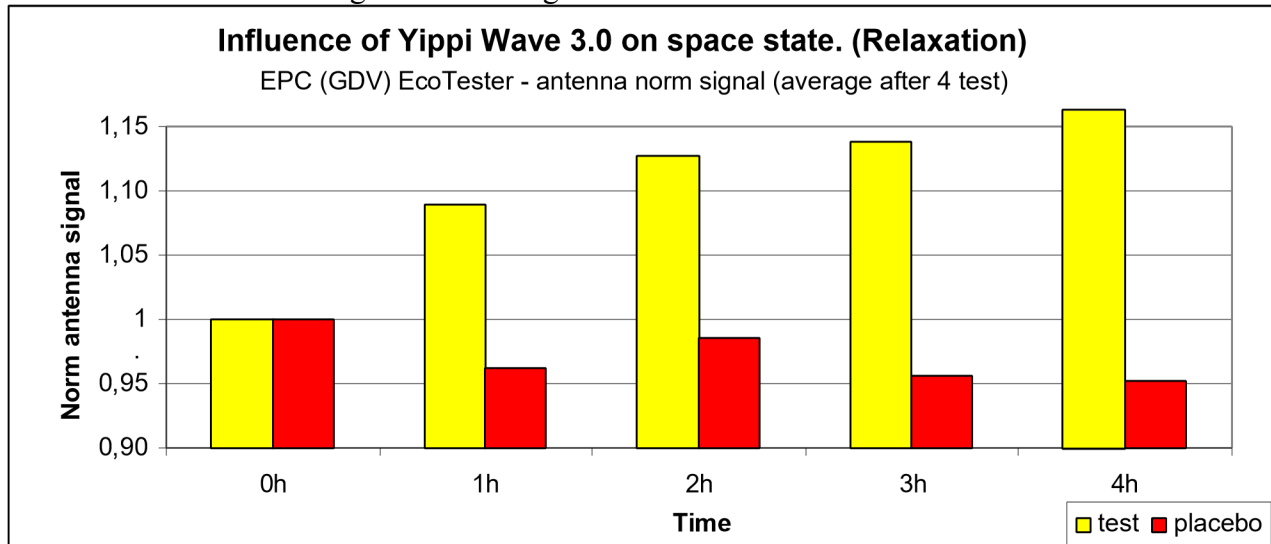


If the space around the antenna is in a good harmonious state –the signal of antenna is higher. The states of space is in a constant changing state because of different influences: day, month and year dynamic, the influence of different electromagnetic fields, geo-active zones, etc.

The test took place in the laboratory room of the research institute. During the tests, the positions of the devices, antenna and the influence of the product were always the same. The test product was placed (mobile phone with Yippi Wave 3.0 Relaxation on audio play mode) in a distance of 30cm from the antenna for 60min repeat mode. The tests were carried out simultaneously in two rooms with one device in each room. One room – placebo measurements, another – test measurements. No person was in the rooms during the influences. It was measured and registered one pulse/min for 5 hours long. An average signal of 60 pulse every hour was measured.

## Results

The normalized antenna signal data average after 4 tests



## Table of data

Time of influences	0min	60min	120min	180min	240min
Test	1	1.089	1.113	1.120	1.185
Placebo	1	0.969	0.977	0.952	0.954
Difference	1	12.0%	13.6%	16.8%	23.1%

The influence for 4 hrs with Yippi Wave 3.0 (Relaxation) digital audio shows an increasing effect compared to placebo in a given space.

## **Part 3. Testing of Yippi Wave 3.0 influence on human body states.**

### **Test Equipment**

#### **EPC – Camera**

This scientific device consist of hardware and software for the direct computer registration and analysis of glow energy of different objects under the influences of pulse EM-field, the human energy and stress states. The recorded images, EPC, are created by a unique patented optical system and CCD camera in daylight condition with real – time processing.

**EPC Camera**



## Measurement Procedure

The product was tested on 10 apparently healthy persons (subjects) of different age and gender. Every measurement was compared with a placebo. The measured subject and the operator of EPC-Camera did not know about it. During the tests the subjects listened to Yippi Wave 3.0 digital audio played on mobile phones held close to the body. The EPC was measured with and without filter. The changes of the EPC Parameters "integral glow area", "energy of glowing" and "activation coefficient" were analysed.

The "integral glow area", "energy of glowing" directly correlates with the human body bio energy. The positive influence of the test product on the human body state is represented in the increasing of the bio energy for healthy, tired persons with stress. On healthy relaxed person with optimal initial bio energy, the product influence will have a neglected weak influence on the quantity, but a positive influence on the quality of the energy: left-right symmetry and homogeneity of glowing. In case of an abnormal high energy, for example inflammatory, the products reduce the body energy in the direction of optimal body energy.

The EPC-Parameter "activation coefficient" correlates with the physiological stress of person. The positively harmonizing influence of the test product is represented in the decreasing of stress levels ("activation coefficient") for healthy person and increasing of the "activation coefficient" for the people with inflammatory state.

## Subjects:

5 subjects male 25 to 60 years old

5 subjects female 35 to 60 years old

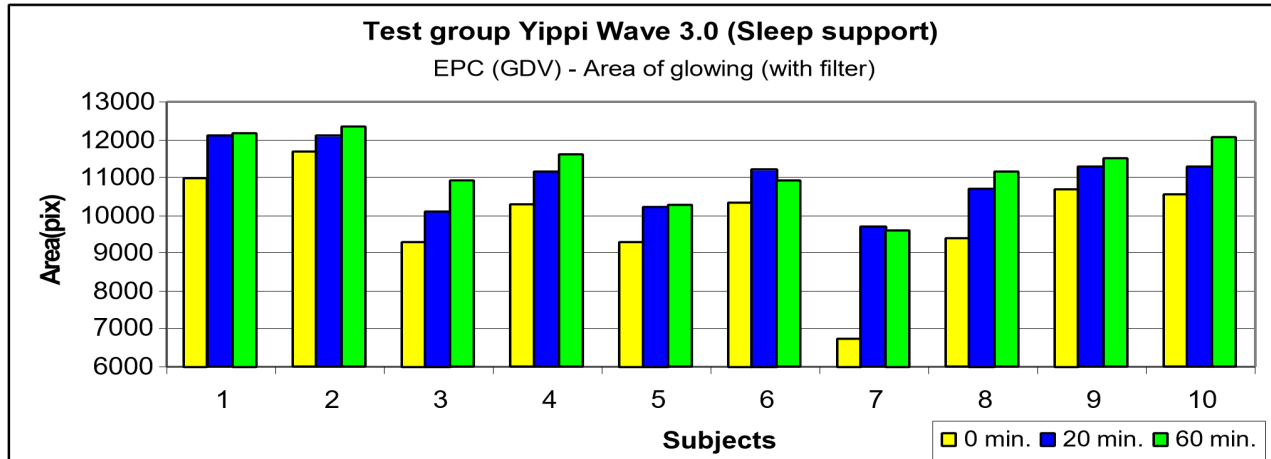
1	male	52
2	male	60
3	female	31
4	female	38
5	male	27
6	female	40
7	male	23
8	female	36
9	male	29
10	female	55

## Test Group

### Influence on Area of glowing (with filter)

The parameter “Area” rose for 1 of 10 subjects during the influence of 20 and 60 minutes.

**Diagram 1** Area of glowing (with filter)



**Data Table of Diagram 1**

Subjects	0 min.	20 min.	60 min.
1	10917	12154	12184
2	11673	12070	12456
3	9205	10003	10981
4	10379	11088	11539
5	9183	10399	10645
6	10403	11136	10983
7	6632	9762	9730
8	9307	10736	11109
9	10573	11254	11397
10	10437	11327	12004

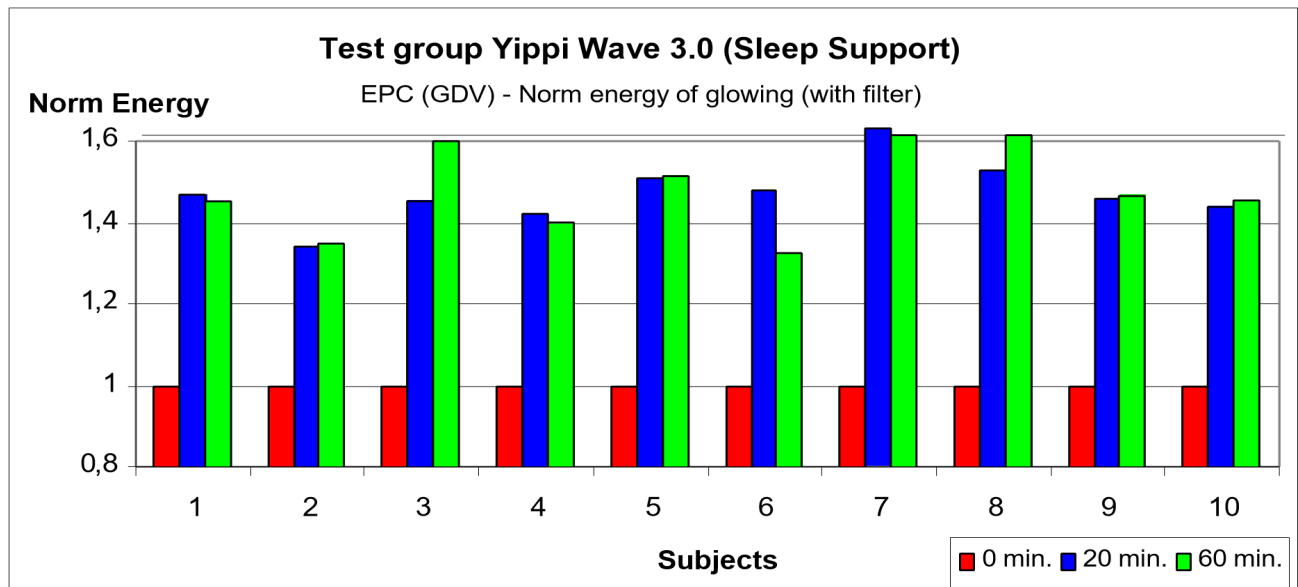
Average in the test group

Time of influence	0min	20min	60min	difference
Average in the group	9871	10993	11303	14.32 %

### Influence on Energy of glowing (with filter)

The parameter “Energy (with filter)” rose for 10 of 10 subjects during the influence of 20 and 60 minutes.

**Diagram 2** Energy (with filter)



**Data Table of Diagram 2**

Subjects	0 min.	20 min.	60 min.
1	1.00	1.46	1.45
2	1.00	1.37	1.38
3	1.00	1.45	1.60
4	1.00	1.42	1.04
5	1.00	1.51	1.52
6	1.00	1.46	1.36
7	1.00	1.63	1.61
8	1.00	1.55	1.61
9	1.00	1.44	1.48
10	1.00	1.42	1.47

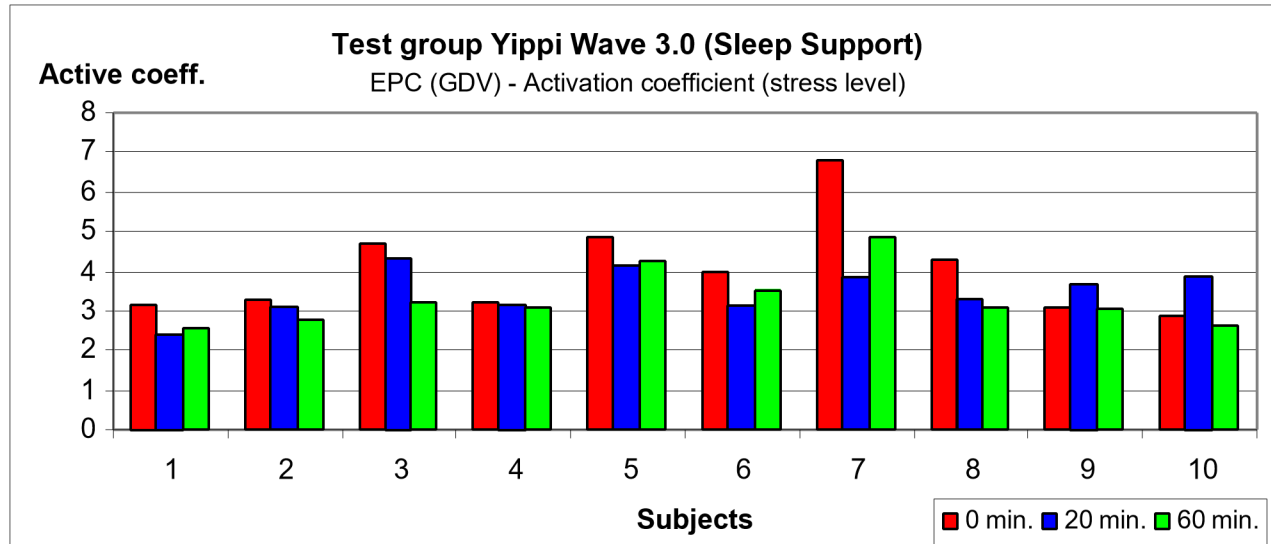
**Average in the test group**

Time of influence	0min	20min	60min	difference
Average in the group	1.0	1.471	1.488	48.8 %

### Influence on Activation coefficient (Stress Level)

The parameter “Activation coefficient” reduced or remained nearly the same for 10 of 10 subjects during the influence of 20 and 60 minutes.

**Diagram 3** Activation coefficient



**Data Table of Diagram 3**

Subjects	0 min.	20 min.	60 min.
1	3.05	2.30	2.60
2	3.32	3.21	2.80
3	4.62	4.30	3.20
4	3.21	3.13	3.02
5	4.90	4.21	4.30
6	4.0	3.10	3.61
7	6.73	3.90	4.95
8	4.24	3.30	3.04
9	3.15	3.65	3.10
10	2.89	3.81	2.50

Average in the test group

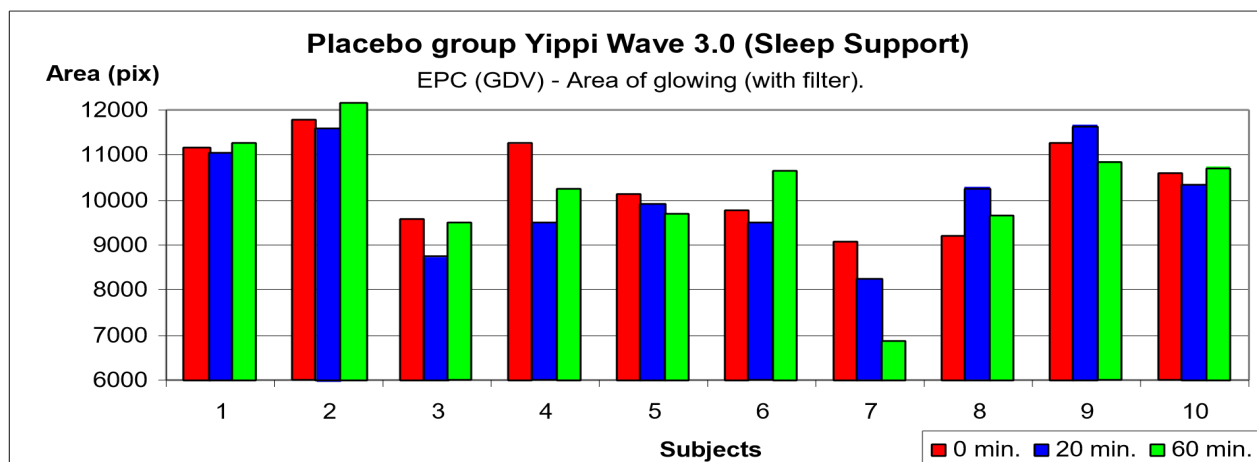
Time of influence	0min	20min	60min	difference
Average in the group	4.011	3.491	3.312	- 7.00 %

## Placebo group

### Influence of Placebo on Area of glowing (with filter)

The parameter “Area” reduces or remained nearly the same for 6 of 10 subjects during the influence of 20 and 60 minutes.

**Diagram 4** Placebo Area of glowing (with filter)



### Data Table of Diagram 4

Subjects	0 min.	20 min.	60 min.
1	11194	11087	11267
2	11881	11688	12023
3	9795	8734	9555
4	11179	9387	10729
5	10085	9795	9533
6	9977	9339	10650
7	9099	8163	6982
8	9137	10311	9657
9	11085	11692	10923
10	10573	10349	10723

#### Average in the placebo group

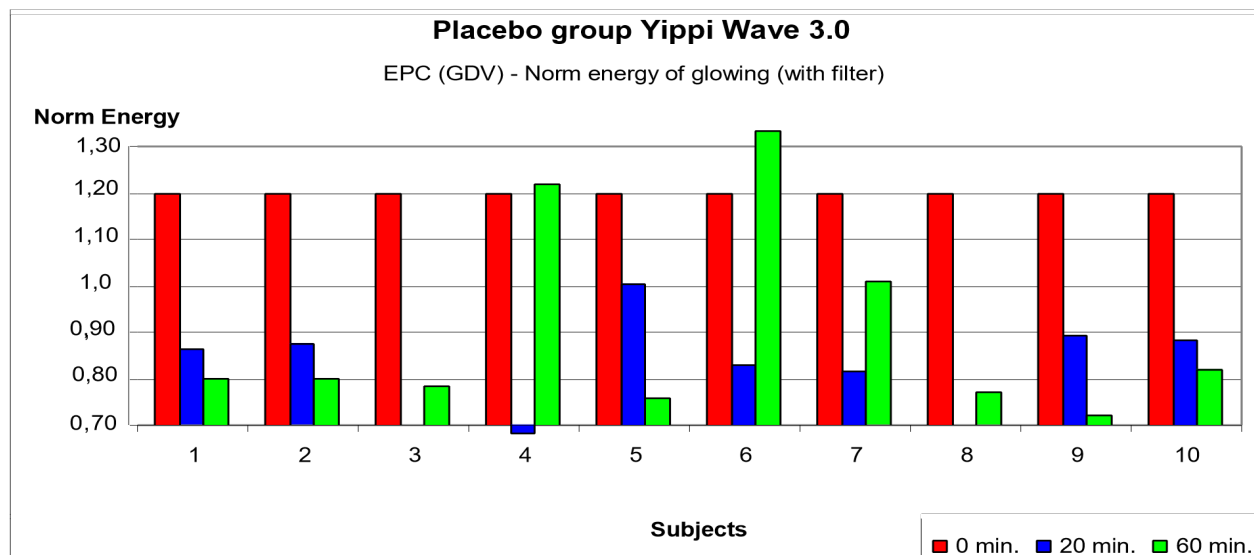
Time of influence	0min	20min	60min	difference
Average in the group	10400	10054	10204	- 1.96%



## Placebo Energy of glowing (with filter)

The parameter “Norm energy (with filter)” reduced or remained nearly the same for 8 of 10 subjects during the influence of 20 and 60 minutes

**Diagram 5** Energy (with filter)



**Data Table of Diagram 5**

Subjects	0 min.	20 min.	60 min.
1	1.0	0.87	0.80
2	1.0	0.88	0.80
3	1.0	0.70	0.76
4	1.0	0.67	1.22
5	1.0	1.01	0.74
6	1.0	0.84	1.33
7	1.0	0.83	1.01
8	1.0	0.70	0.76
9	1.0	0.89	0.72
10	1.0	0.87	0.83

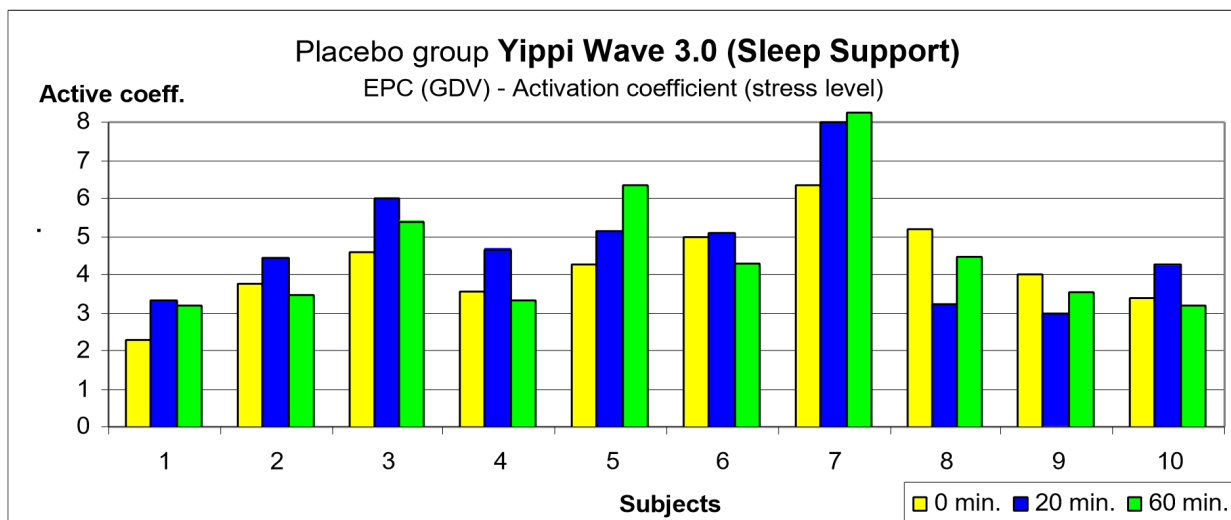
Average in the placebo group

time of influence	0min	20min	60min	difference
Average in the group	1.0	0.826	0.897	- 10.3 %

## Influence on Activation coefficient (Stress Level) in placebo group

The parameter “Activation coefficient” rose for 8 of 10 subjects during the influence of 20 and 60 minutes.

**Diagram 6** Activation coefficient



**Data table of Diagram 6**

Subjects	0 min.	20 min.	60 min.
1	2.35	3.30	3.20
2	3.73	4.40	3.35
3	4.50	6.00	5.44
4	3.40	4.70	3.34
5	4.20	5.14	6.40
6	5.00	5.10	4.30
7	6.30	8.00	8.30
8	5.20	3.20	4.34
9	4.00	3.00	3.47
10	3.40	4.21	3.30

Average in the placebo group

time of influence	0min	30min	60min	difference
Average in the group	4.208	4.704	4.544	13.5%

## **5. Conclusion: differences between test and placebo**

**Influence on human - average in the group:**

**Area (with filter) ---- 14.32%**

**Energy (with filter) ---- 48.8%**

**Stress ----- -7.0%**

**Influence water: Maximum water enhancement at 60 minutes**

**Influence space: after 4 hours – 23.1%**

---

**Yippi Wave 3.0 (Wellness programs) of TOGA Limited has and energetic positive regulating and harmonizing influence on the human body, water and space.**

**This may be the first study to show that specific frequencies of a purported subtle energy conveyed by software applications broadcast from personal electronic devices can be bioactive.**

---



Министерство спорта Российской Федерации



Федеральное государственное бюджетное учреждение  
«САНКТ-ПЕТЕРБУРГСКИЙ  
НАУЧНО-ИССЛЕДОВАТЕЛЬСКИЙ ИНСТИТУТ ФИЗИЧЕСКОЙ КУЛЬТУРЫ»

191040, Санкт-Петербург, Лиговский пр, 56, корпус Е,. Тел./факс (812)6004117  
e-mail: office@spbniifk.ru (<http://www.spbniifk.ru>)

---

## Certification

### Pilot Study: Effects of Quantum Resonance through Digital Audio Application (Yippi Wave 3.0)

Professor Dr. Konstantin G. Korotkov, Deputy Director of the Saint Petersburg Federal Research Institute of Physical Culture of the Ministry of Sport of Russia certifies, that the following product of the TOGA LIMITED company (Nevada, USA) has been analyzed and tested and is summarized as follows:

#### Product

Yippi Wave 3.0

- Quantum Nutrition
  - Sleep Support
  - Quantum Healthcare
  - Relaxation
  - Brain Enhancement
1. The tests informed Yippi Wave 3.0 increases and balances the levels of energy and harmony in humans. It has a positive direct building up consequence on the bio-energetic state of humans.
  2. The tests informed Yippi Wave 3.0 has a positive effect on water and space.
  3. After careful evaluation of the report we may conclude that all experiments was done in accordance with CONSORT protocol, all conclusions and results may be accepted as significant.

Professor, Doctor of Science

---

Professor Dr. Konstantin G. Korotkov  
11.11.2019

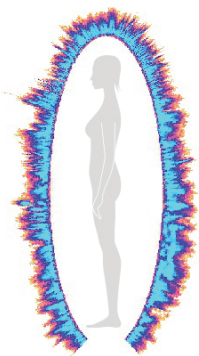
## Analysis of a Personal Energetic Homeostasis by Measuring Energy Field - Yippi Wave 3.0 Relaxation

Ma 2019-09-23 17:17:29, Ma 2019-09-23 17:23:38

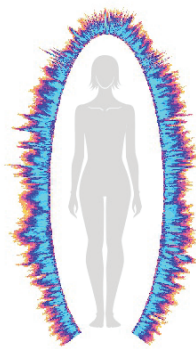
### Energy Field

Ma 2019-09-23 17:17:29

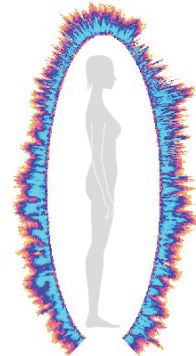
Energy 48 Joules ( $\times 10^{-2}$ )  
Balance 97%



Left



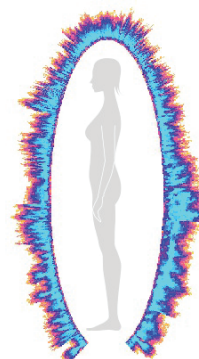
Front



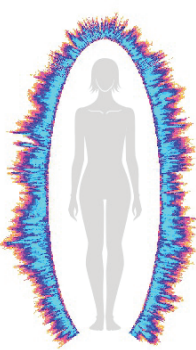
Right

Ma 2019-09-23 17:23:38

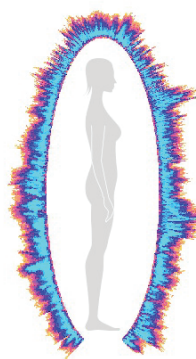
Energy 50 Joules ( $\times 10^{-2}$ )  
Balance 99%



Left



Front



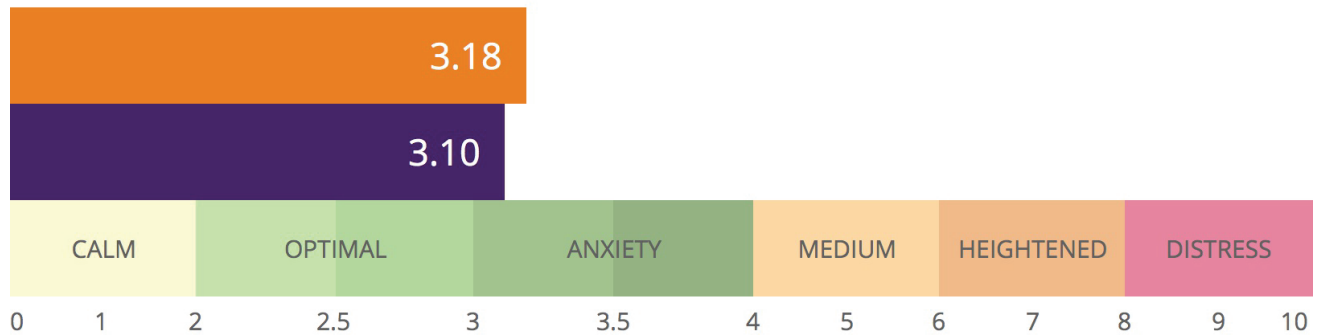
Right

Human Energy Field - is the most sensitive reflection of the physical, emotional and, in some cases, spiritual condition of a person. The image of Energy Field, created in Bio-Well software is based on the concept of acupuncture points and is verified by more than 20 years of clinical experience by hundreds of medical doctors and researchers with many thousands of patients.

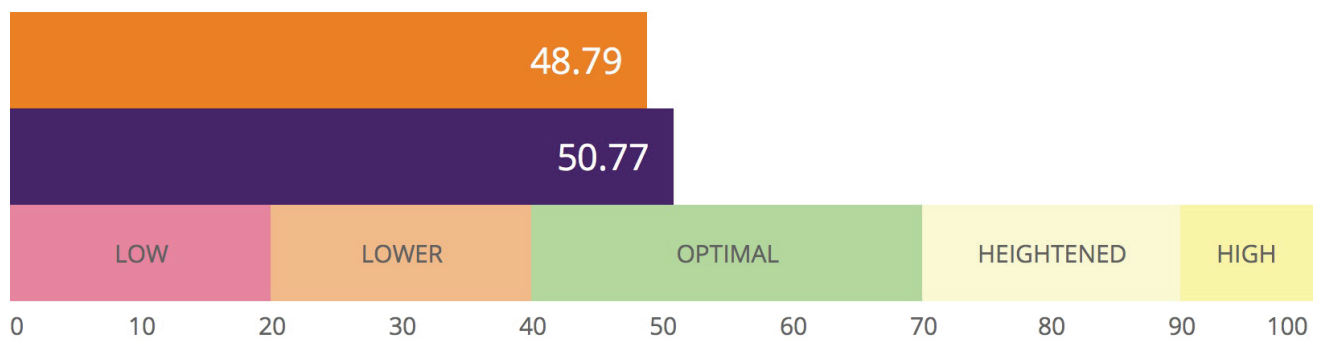
*Bio-Well is not a medical instrument, it is not designed for medical diagnostics, it measures energy and stress of a person. In case of health concerns, please, consult your doctor.*

## Analysis

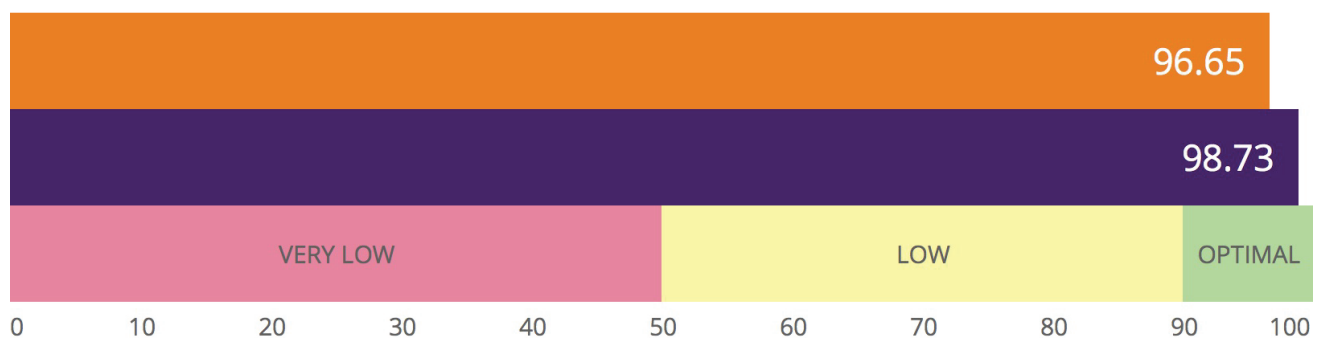
### STRESS



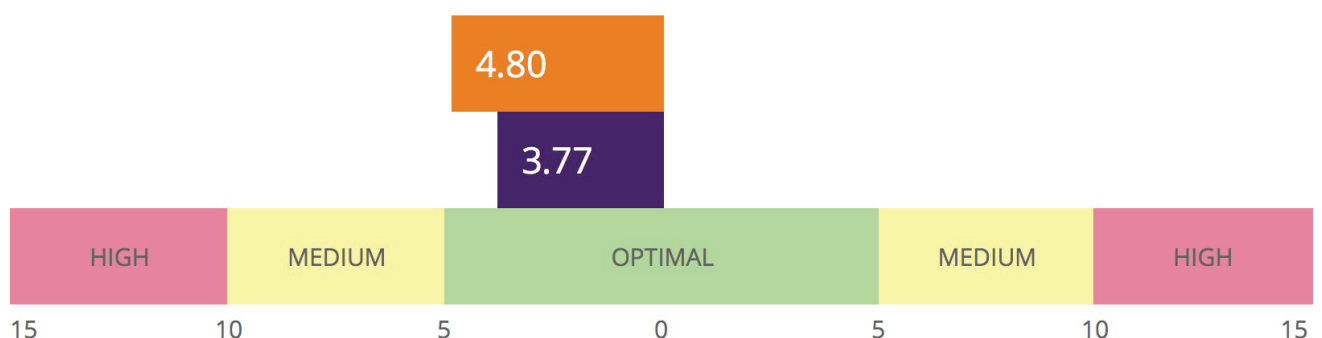
### ENERGY



### BALANCE



### \*ORGANS DISBALANCE, %



2019-09-23 17\_17 - ...  
2019-09-23 17\_23 - ...

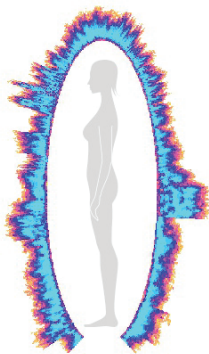
## Analysis of a Personal Energetic Homeostasis by Measuring Energy Field - Yippi Wave 3.0 (Quantum Nutrition)

Fang 2019-09-23 17:32:23, Fang 2019-09-23 17:39:04

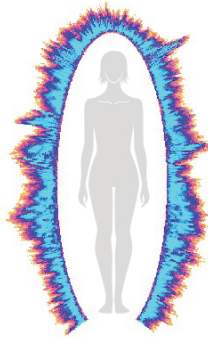
### Energy Field

Fang 2019-09-23 17:32:23

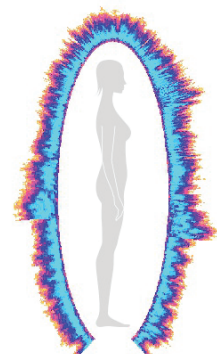
Energy 46 Joules ( $\times 10^{-3}$ )  
Balance 93%



Left



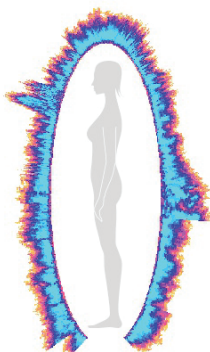
Front



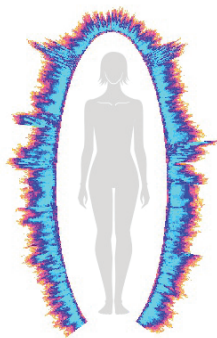
Right

Fang 2019-09-23 17:39:04

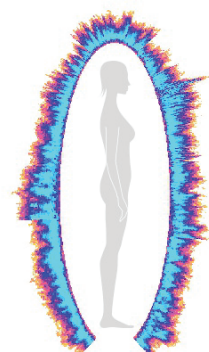
Energy 45 Joules ( $\times 10^{-3}$ )  
Balance 97%



Left



Front



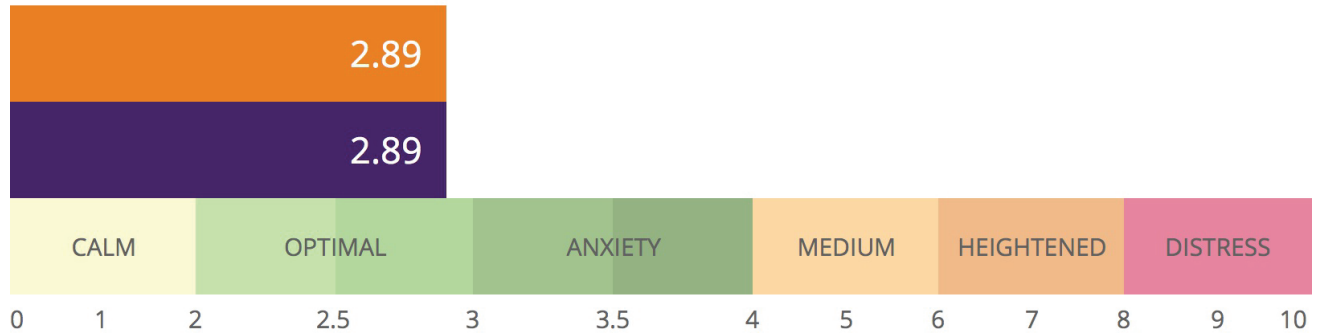
Right

Human Energy Field - is the most sensitive reflection of the physical, emotional and, in some cases, spiritual condition of a person. The image of Energy Field, created in Bio-Well software is based on the concept of acupuncture points and is verified by more than 20 years of clinical experience by hundreds of medical doctors and researchers with many thousands of patients.

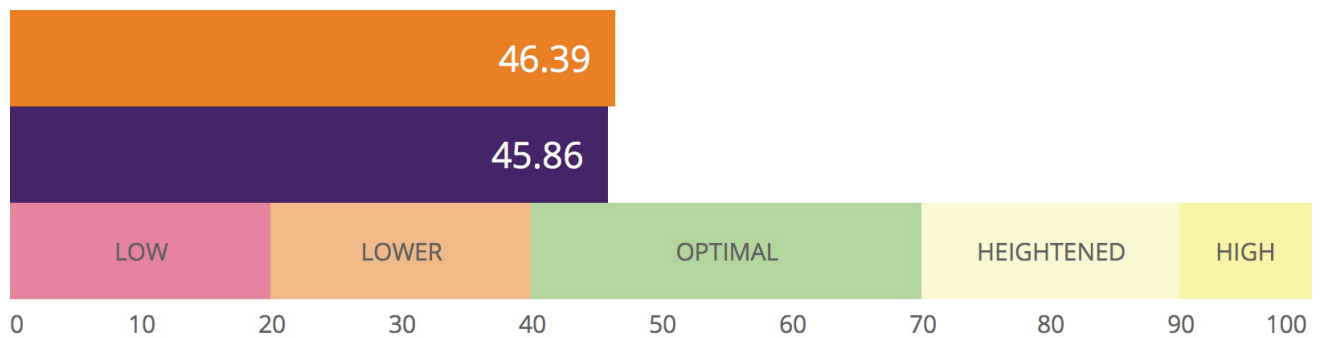
*Bio-Well is not a medical instrument, it is not designed for medical diagnostics, it measures energy and stress of a person. In case of health concerns, please, consult your doctor.*

## Analysis

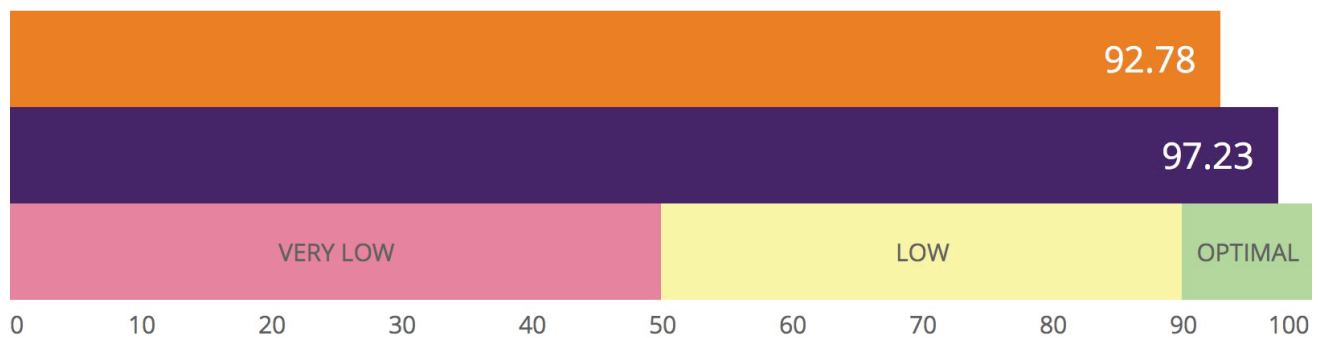
### STRESS



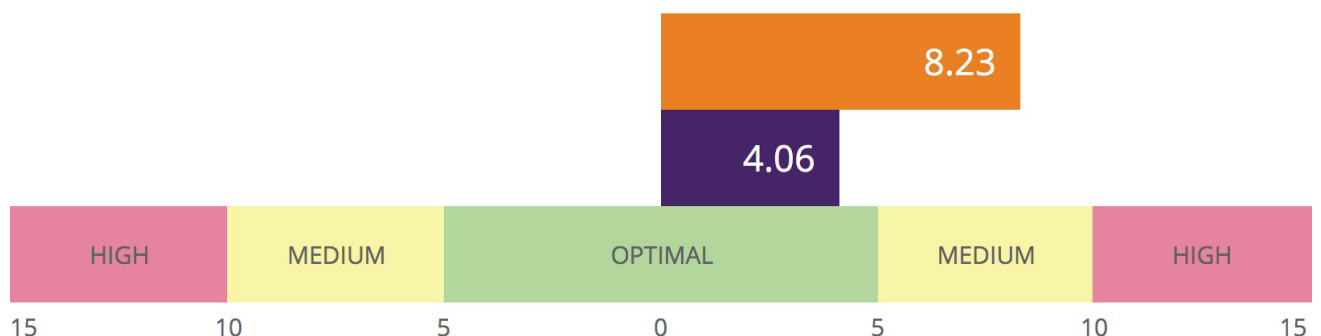
### ENERGY



### BALANCE



### \*ORGANS DISBALANCE, %



2019-09-23 17\_32 - Fa...  
2019-09-23 17\_39 - Fa...